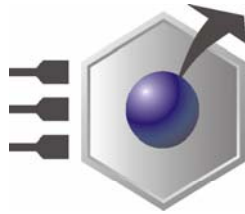


***EmbeddedDNA***<sup>®</sup>



***An0050***

**CPU-1x32; Windows CE**

Rev. 1.0

April 2005

COPYRIGHT 1994-2005 Eurotech S.p.A. All Rights Reserved.



Via J. Linussio 1  
33020 AMARO (UD)  
ITALY

Phone: +39 0433 485 411  
Fax: +39 0433 485 499

Web: <http://www.eurotech.it>  
E-mail: <mailto:sales@eurotech.it>

#### NOTICE

**Although all the information contained herein has been carefully verified, Eurotech S.p.A. assumes no responsibility for errors that might appear in this document, or for damage to property or persons resulting from an improper use of this manual and of the related software. Eurotech S.p.A. reserves the right to change the contents and form of this document, as well as the features and specifications of its products at any time, without notice.**

Trademarks and registered trademarks appearing in this document are the property of their respective owners

---

## Contents



---

<b>Contents .....</b>	<b>3</b>
Conventions .....	4
Introduction .....	5
<b>Chapter 1 Creating a Bootloader disc for Windows CE .....</b>	<b>6</b>
<b>Chapter 2 Install &amp; configure the Ethernet adaptor .....</b>	<b>8</b>
<b>Chapter 3 Connecting a Terminal Emulator .....</b>	<b>10</b>
<b>Chapter 4 BIOS Settings .....</b>	<b>14</b>
<b>Chapter 5 Boot With Ethernet Procedure .....</b>	<b>16</b>
<i>Initial Requirements:</i> .....	17
<i>Set-up Procedure:</i> .....	18
<b>Chapter 6 Configuring a stand-alone system .....</b>	<b>22</b>
<b>Chapter 7 Frequently asked questions .....</b>	<b>24</b>
<b>Where to find us.....</b>	<b>25</b>

---

## Conventions

The following table lists conventions used throughout this guide.

Icon	Notice Type	Description
	<b>Information note</b>	Important features or instructions
	<b>Warning</b>	Information to alert you to potential damage to a program, system or device or potential personal injury

---

## Introduction

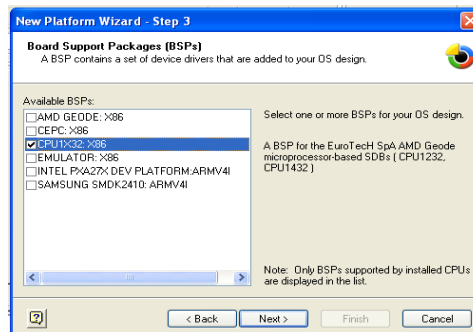
We recommend that you download a copy of the Board Support Package (BSP) from the Eurotech website:

Follow the route in the following table for your appropriate download:

<a href="http://www.eurotech.it">www.eurotech.it</a>	
Download	
PC104	PC104+
CPU-1232	CPU-1432
WinCE	WinCE

- Cpu1x32\_wce42\_bsp\_1\_00.msi
  - Version for Microsoft Platform Builder 4.2
- Cpu1x32\_wce50\_bsp\_1\_00.msi
  - Version for Microsoft Platform Builder 5.0

These packages contain a full set of device drivers for adding to your OS design as shown below:



This application note describes the process of downloading and running a Windows CE image on a CPU-1232 or CPU-1432 development system.

We will explain the following:

- How to best create a Bootloader disk for booting a Windows CE image
- The installation of an Ethernet Adaptor and how to edit the Bootloader file to reflect this
- How to configure a terminal emulator to enable boot sequence debugging
- How to configure the Target system BIOS to enable correct functionality
- How to boot the Target system, allowing download of the Windows CE image across the LAN
- How to boot the Target system as a stand-alone device.

Notes:

The system running the Microsoft Platform Builder 5 software will be referred to as the **Development System** and the CPU-1X32 system will be referred to as the **Target System**

---

## Chapter 1 Creating a Bootloader disc for Windows CE

---

The Windows CE Bootloader Disk will give the operator several options for booting their Target system; a menu will appear on the Target system during the boot sequence, all the options are listed below:

1. CEPC\_LOCAL, Boot CE/PC (local NK.BIN)
  - Boot the Target system using the NK.BIN image stored on the boot device.
2. CEPC\_1024, Boot CE/PC (ether via eboot.bin with /L: 1024x768x8)
  - Boot the Target system using the Windows CE image currently in use on the development system.
  - Transfer is managed across the LAN.
  - Screen resolution is set to 1024 pixels x 768 Pixels with 8 colours.
3. CEPC\_800, Boot CE/PC (ether via eboot.bin with /L: 800x600x16)
  - Boot the Target system using the Windows CE image currently in use on the development system.
  - Transfer is managed across the LAN.
  - Screen resolution is set to 800 pixels x 600 Pixels with 16 colours.
4. CEPC\_640, Boot CE/PC (ether via eboot.bin with /L: 640x480x32)
  - Boot the Target system using the Windows CE image currently in use on the development system.
  - Transfer is managed across the LAN.
  - Screen resolution is set to 640 pixels x 480 Pixels with 32 colours.
5. CEPC\_SERIAL, Boot CE/PC (serial via sboot.bin)

**NOTE:** *this Application note does not cover this option.*

- Boot the Target system using the Windows CE image currently in use on the development system.
  - Transfer is managed across a Serial connection.
6. VESATEST, Run Vesa Test program and list valid display modes.
    - Vesa Test programme is run and lists available display modes.
  7. CLEAN, Clean Boot (no commands)

The Target system boots to the operating system on the Bootloader disc

We suggest three possible methods for creating a Windows CE/PC boot disc:

**Method 1:**

Use the CEPCBOOT.144 disk image (Part of the Windows Platform Builder Installation).

**Note:**

*The following is an abstract from a Microsoft Windows readme.txt file found with the Windows Platform Builder 5 Documentation*

- Install the websetup application (note that this only needs to be done once) by executing websetup.exe in %CEPBDDir%\cepb\utilities.
- Once websetup is installed, “executing” cepcboot.144 (either by running “cepcboot.144” from the command line or double clicking on the cepcboot.144 icon in File Explorer) will start the websetup application.
- Insert a floppy disk in the drive and follow the on-screen instructions to create a CE/PC Bootloader disk.

**Method 2:**

Create a bootable MS-DOS disk by following the instructions that came with your MS-DOS version.

**Note:**

*The following is an abstract from a Microsoft Windows readme.txt file found with the Windows Platform Builder 5 Documentation*

- Copy himem.sys from your MS-DOS distribution to the boot floppy
- Copy all the Bootloader disk files from the %\_WINCEROOT%\public\common\oak\csp\i486\dos\bootdisk directory.
- Optionally copy the Ethernet Bootloader (eboot.bin) or serial Bootloader (sboot.bin) images from a recent CE/PC build to the disk (this would only be necessary if you’ve updated the loader code).

**Method 3:**

Create a bootable storage device for a stand-alone bootable system.

**Notes:**

*a) The following assumes that you have a registered copy of MS-DOS and Windows Platform Builder 5*

*b) The Bootloader\_CPU\_1X32\_1\_00.zip file is available on request from Eurotech by contacting [Techsupp@eurotech.it](mailto:Techsupp@eurotech.it)*

- Using MS-DOS utilities, create a single primary partition.
- Format (using /s option) your storage device (Hard disc, Disk-on-module, Disc-on-chip...)
- Extract the file “Bootloader\_CPU\_1X32\_1\_00.zip” to this device.
- Overwrite any files as requested.

## **Chapter 2 Install & configure the Ethernet adaptor**

---

If you intend to boot your Target system using a LAN connection you will be required to install and configure an Ethernet adaptor, the following pages will show how to install a Eurotech adaptor and what modifications need to be made on the Bootloader disk.



Install a supported Ethernet network card (read the Platform Builder documentation for a current list of the default network cards supported).

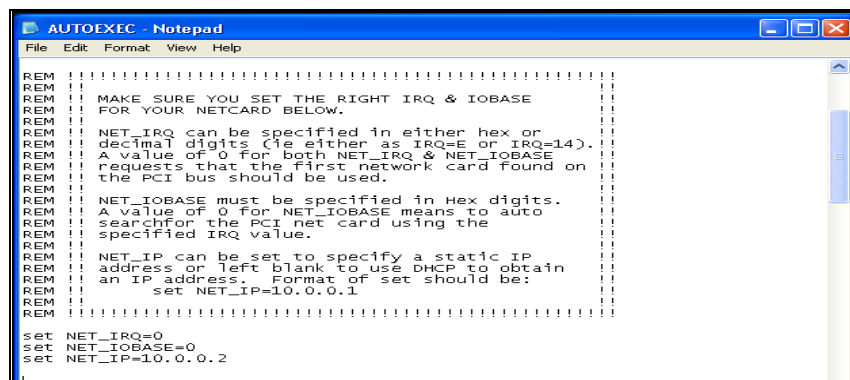
With the CPU-1232 and the CPU-1432 you can use the Eurotech Ethernet adaptor:

Model Number	Part No.	Connect to
CPU-1232	ACS-9071-03	J18
CPU-1432	ACS-9071-01	J7

*Note: These adaptors are available from Eurotech, for prices and availability contact the marketing department at [sales@eurotech.it](mailto:sales@eurotech.it)*

You will then need to edit the AUTOEXEC.BAT file on the Bootloader disk (created in chapter 1) to alter the configuration information to reflect the cards *IO base address*, *IRQ* and *Network IP* values.

The following picture shows an extract of the "AUTOEXEC.BAT" file, note the bottom three lines "Set NET\_IRQ", "NET\_IOBASE" and "NET\_IP", these are the values that require editing.



```

REM !!!!!!!!!!!!!!!!!!!!!!!!!!!!!!!!!!!!!!!!!!!!!!!!!!!!!!!!!!!!!!!!!!!!!!!
REM !!
REM !! MAKE SURE YOU SET THE RIGHT IRQ & IOBASE
REM !! FOR YOUR NETCARD BELOW.
REM !!
REM !! NET_IRQ can be specified in either hex or
REM !! decimal digits (ie either as IRQ=E or IRQ=14).
REM !! A value of 0 for both NET_IRQ & NET_IOBASE
REM !! requests that the first network card found on
REM !! the PCI bus should be used.
REM !!
REM !! NET_IOBASE must be specified in Hex digits.
REM !! search for the PCI net card using the
REM !! specified IRQ value.
REM !!
REM !! NET_IP can be set to specify a static IP
REM !! address or left blank to use DHCP to obtain
REM !! an IP address. Format of set should be:
REM !!      set NET_IP=10.0.0.1
REM !!
REM !! !!!!!!!!!!!!!!!!!!!!!!!!!!!!!!!!!!!!!!!!!!!!!!!!!!!!!!!!!!!!!!!!!!!!!!!
set NET_IRQ=0
set NET_IOBASE=0
set NET_IP=10.0.0.2

```

Following are examples of how the two values "NET\_IRQ" and "NET\_IOBASE" are used by the loader:

- Example 1
  - Set NET\_IRQ=0
  - Set NET\_IOBASE=0

Scan the PCI bus and use the first Ethernet controller found.

- Example 2
  - Set NET\_IRQ=Value1
  - Set NET\_IOBASE=0

Scan the PCI bus for the Ethernet controller with an IRQ=Value1.  
Once found, read the IOBASE value from the PCI configuration header.

- Example 3
  - Set NET\_IRQ=Value1
  - Set NET\_IOBASE=Value2

Scan the PCI bus for the Ethernet controller with an IRQ=Value1 and with an IOBASE=Value2.

If no such controller is found on the PCI bus, assume it's a NE2000 compatible ISA device.

For PCI based Ethernet controllers, the controller type is determined by looking up the PCI vendor and device identities in a table. Note that this table (located in the CE/PC eboot directory) may need to be updated if your card type is not detected (and it is not a NE2000 compatible card).

The IP address should reflect the IP address of the Target system.

## **Chapter 3 Connecting a Terminal Emulator**

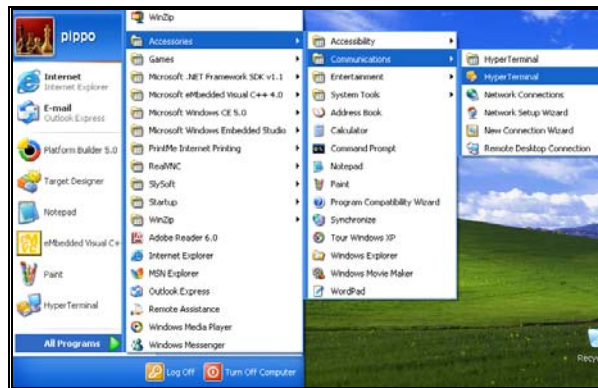
---

It is possible to configure a terminal emulator on the development system, this will allow the developer to visualize exactly what is happening as the Target system is booting.

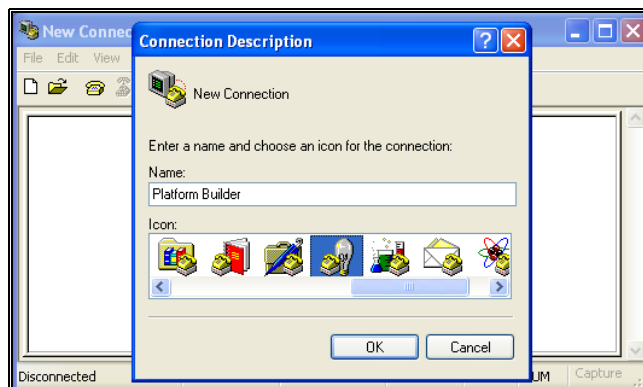
This chapter shows how this can be done.

Connect your “Development system” COM1 to the “Target system” COM1 using a Null Modem cable.

1. Open “Hyper Terminal”



2. Create a name for your connection and select a suitable Icon, then click “OK”

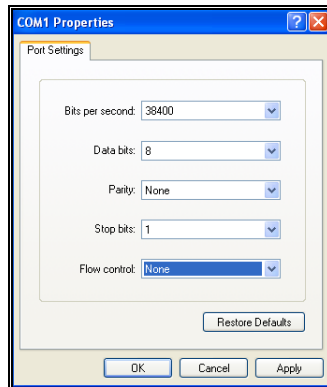


3. Select “Connect using”, “COM1”, then Click “OK”

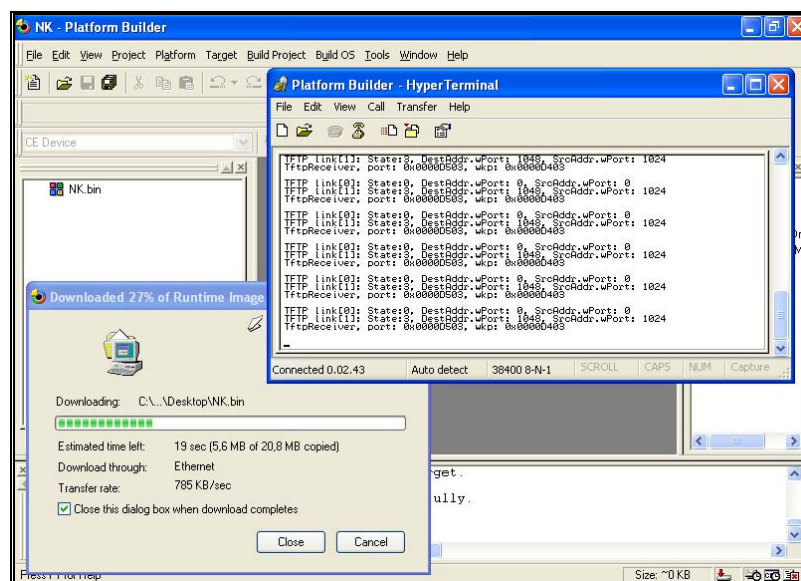


4. Set the following, then click “Apply”, “OK”

- “Bits per second” 38400
- “Data Bits” 8
- “Parity” none
- “Stop Bits” 1
- “Flow Control” none



5. The following shows the Hyper Terminal functioning whilst the “DTK-1X32-99” is booting.



The two computers are connected together using the serial ports, for this you will require a null modem cable as described below:

Unlisted pins have no connection, *Extract from "The PC Handbook Seventh Edition"*.

#### Male 25-Pin D-Sub

System 1	Pin	Pin	System 2
TX	2	3	RX
RX	3	2	TX
RTS	4	8	DCD
CTS	5		
DSR	6	20	DTR
DCD	8	4	RTS
		5	CTS
DTR	20	6	DSR

Pins 3 and 4 are shorted together on each connector.

#### Male 9-Pin D-Sub

System 1	Pin	Pin	System 2
TX	3	2	RX
RX	2	3	TX
RTS	7	1	DCD
CTS	8		
DSR	6	4	DTR
DCD	1	7	RTS
		8	CTS
DTR	4	6	DSR

Pins 7 and 8 are shorted together on each connector.

## Chapter 4 BIOS Settings

---

Some BIOS settings will need to be verified on the Target system to enable the Windows CE image to function correctly when downloading the image from the “Development system” and when using the Terminal Emulator.

This chapter shows the required settings for using our own Nk.bin image; if you are using a locally generated image you may find that the BIOS setting would need to be different.

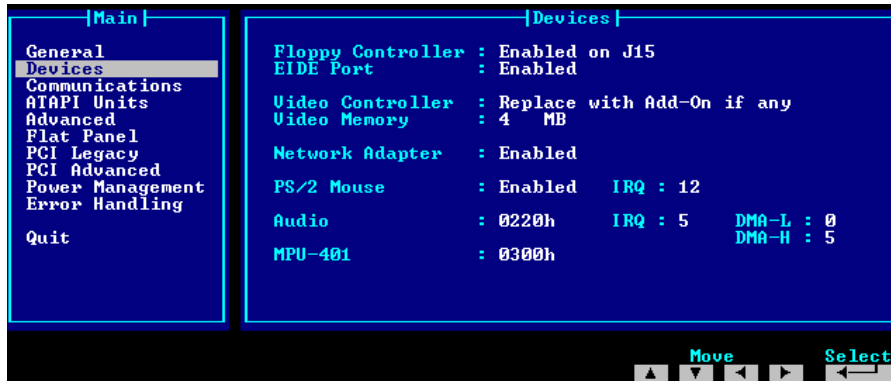
If you require a copy of our example NK.BIN file as used for this document please contact Eurotech technical support at [Techsupp@eurotech.it](mailto:Techsupp@eurotech.it)

In order to properly run your CPU-1X32 based device using the out image we needed to set the BIOS settings as follows:

1. If you use a Disk-On-Chip, make sure it is mapped starting at memory address D0000

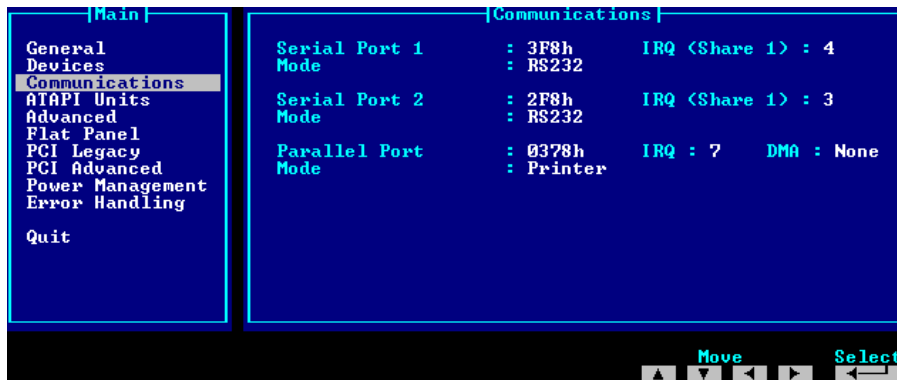
2. *Devices* menu

- Audio: 0220h IRQ: 5 DMA-L: 0 DMA-H: 5
- MPU-401: 0300h



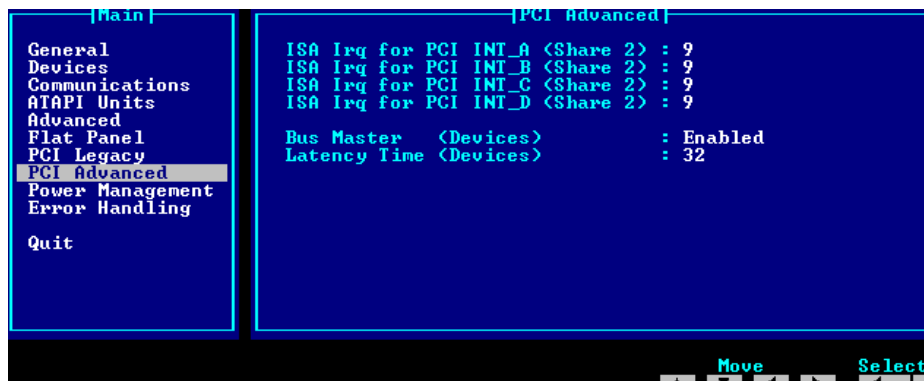
3. *Communications* menu

- Serial Port 1: 3F8h IRQ (Share 1): 4
- Serial Port 2: 2F8h IRQ (Share 1): 3
- Parallel Port: 0378h IRQ: 7 DMA: None



4. *PCI Advanced* menu (CPU-1432 only)

- Bus Master (Devices): Enabled



## **Chapter 5 Boot With Ethernet Procedure**

---



## Initial Requirements:

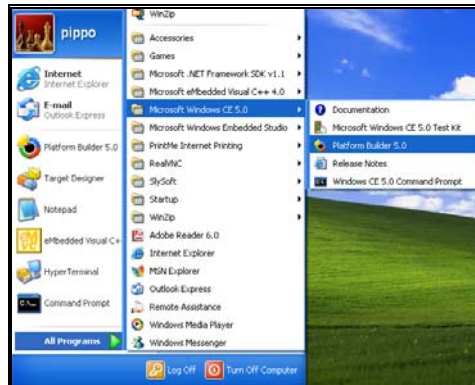
The instructions on the following pages were compiled using the following system and configuration:

- CPU-1232 (Target System)
- ACS-9071-03 Ethernet Adaptor connected to J18
- 32MB Flash Card installed as primary boot device and boot information installed using method one from chapter 1.
- The Development system running Platform Builder 5.0 had an IP address of 10.0.0.1
- The Autoexec.bat was edited to read:
  - Set NET\_IRQ=0
  - Set NET\_IOBASE=0
  - Set NET\_IP=10.0.0.2
- Null Modem cable was connected from Target system COM1 to the Development system COM1 port.
- A crossed network cable was connecting the Target Ethernet adaptor to Development system Ethernet port.
- The Development system was OFF

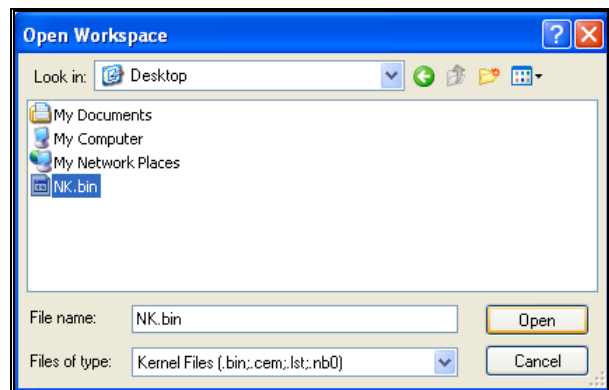
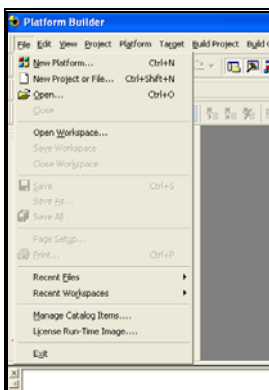
NOTE: Our NK.BIN must have a Primary boot device connected to the IDE interface

## Set-up Procedure:

### 1. Launch “Platform Builder 5”

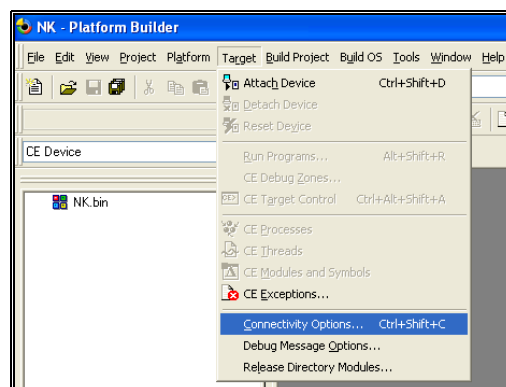


### 2. Open your project.

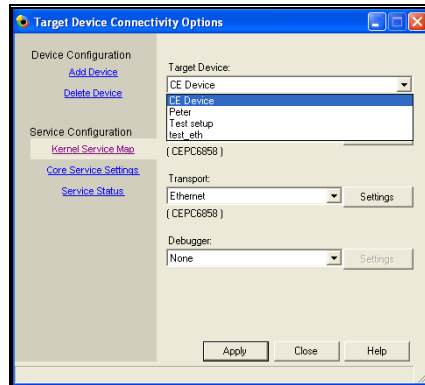


### 3. Set-up Target system parameters from within “Platform Builder 5”

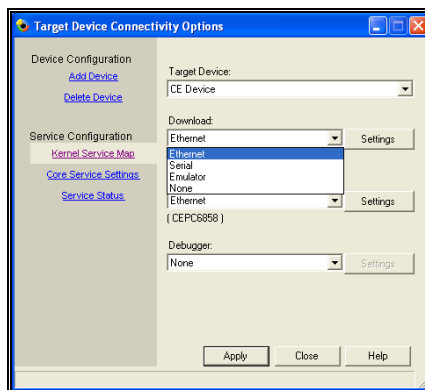
- Select menu, “Target”, “Connectivity options”



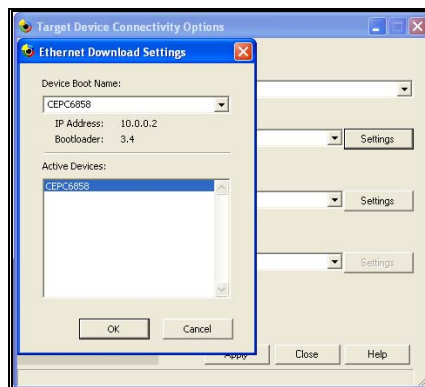
- Select Target device name (Add a new device name if required)



- In the “Kernel Service Map” area
  - Set “Download:” dropdown menu to “Ethernet”

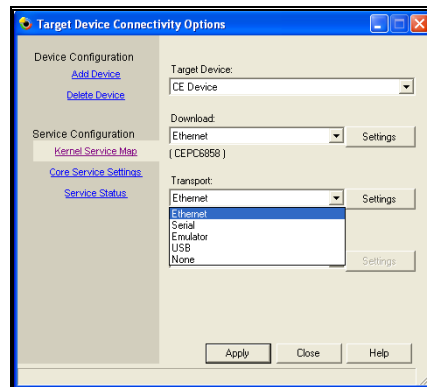


- Click “Settings” button for the Download device.

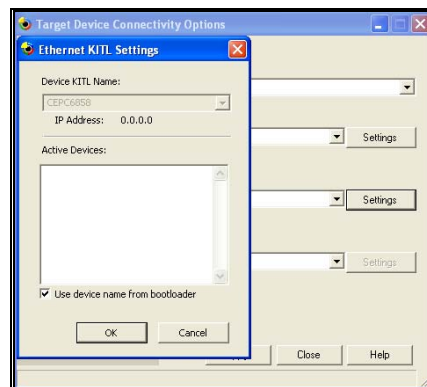


- Examine the window “Active Device”
- Boot the “Target Device”
- On the “Target Device”, Select one of the Ethernet Download Options when the boot menu appears (Option 2,3 or 4)
- After a short time the system name should appear in the “Active Devices” window, Select that device i.e. CEPC6858.
- The “IP Address:” and “Bootloader:” should change to reflect the Target device (in our case: IP Address 10.0.0.2 and Bootloader 3.4)
- Click “OK”

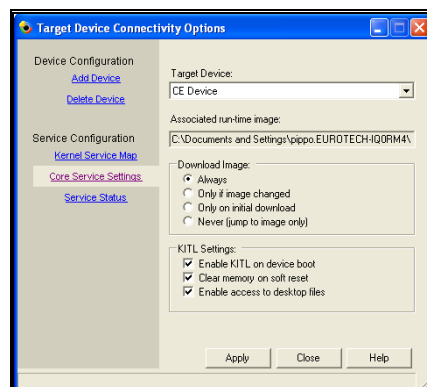
- Set “Transport:” dropdown menu to “Ethernet”



- Click “Settings” button for the Transport device



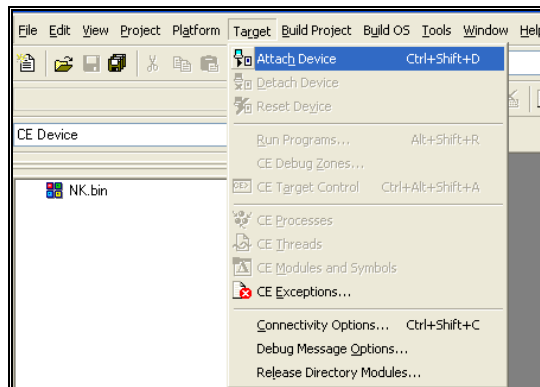
- Confirm that the “Use device name from Bootloader” is checked
- Select OK
- In the section “Core Service Settings”



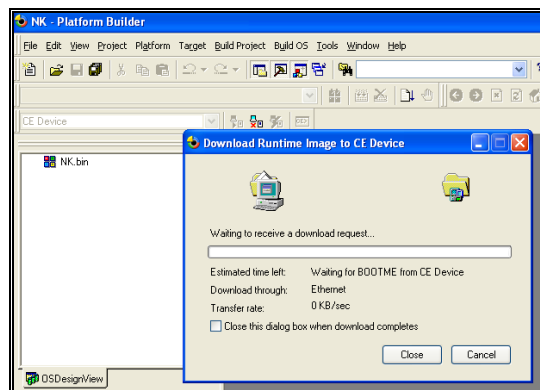
- Select the radio button “Download Image”, “Always”
- Click “Apply” then “Close”

#### 4. Connecting with the “Target Device”.

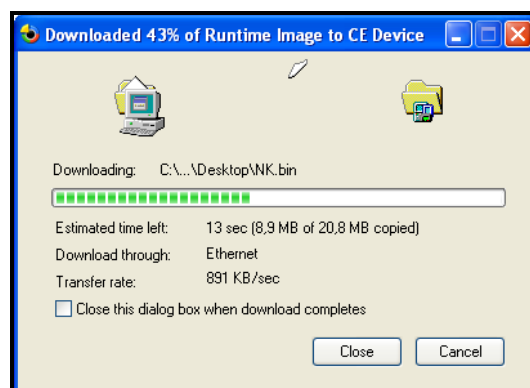
- Select menu, “Target”, “Attach Device”



- A Panel should displayed “Download Runtime Image to CE Device”



- If the “Progress bar” shows no activity at this point, reboot the “Target Device”, remember to select the correct Ethernet Download Options when the boot menu appears (Option 2,3 or 4)
- After a short time the progress bar should start as below



- After completion the Target system should boot to the Windows CE environment

## **Chapter 6 Configuring a stand-alone system**

---

This Chapter describes how to set-up your development system as a stand alone device:

You will require the following:

1. A working copy of an NK.BIN file.
2. All components connected to the Development system as required by the Windows CE set-up, i.e. Hard Drive, CODEC etc

It is best if you already have a NK.BIN that has been proven to work on your development system using the Ethernet download.

1. Create a Bootloader disk as described in Chapter 1
2. Copy the NK.BIN file onto the Bootloader disk
3. Reboot the system (Remember to make sure that the boot sequence in the

NOTE: *Remember to alter the boot sequence in the BIOS settings to reflect your device.*

4. When the options menu appears Select option 1:  
(CEPC\_LOCAL, Boot CE/PC (local NK.BIN))
5. This should boot your NK.BIN file that is on the Boot Device

There are many ways to boot the Development system we have successfully tried the following methods:

- Using standard IDE Hard Drive
  - Use "SYS C:" to make the Hard Drive a system disk
  - A) Copy the contents of the Bootloader disk onto the hard drive or use one of the methods in chapter 1.
  - Copy NK.BIN to the Hard drive
  - Remove any Floppy Disks as required and reboot the system.
  - You should get the boot menu appearing, Select option 1.
- From Disk-On-Chip
  - Install Disk-On-Chip (Check that pin 1 is correctly aligned)
  - Enable the Disk-On-Chip in the BIOS settings, and set base address as required.
  - **Optional:** Use "DUPDATE C: /S:DOC42.EXB /FIRST", this makes the Disk-On-Chip the first bootable device.
  - Use "SYS C:" to make the Disk-On-Chip a system disk
  - Copy the contents of the Bootloader disk onto the Disk-On-Chip.
  - Copy the NK.BIN file to the Disk-On-Chip.
  - Remove any Floppy Disks as required and reboot the system.
  - You should get the boot menu appearing, Select option 1.
- From a Flash-Disk
  - Connect the Flash disc to the CPU-1X32 using an appropriate adaptor.
    - Example adaptors ADP-1020-00 or ADP-1020-01, for further information contact [Sales@eurotech.it](mailto:Sales@eurotech.it) or [Techsupp@eurotech.it](mailto:Techsupp@eurotech.it)
  - Use same method as standard IDE Hard Drive

## Chapter 7 Frequently asked questions

---

In our experience most problems have been related to one of the following:

- The Windows CE image not functioning in the first place
  - a. Try an image that is known to work
- The image has dependencies that are not present i.e.
  - a. Hard Drive
  - b. Sound CODEC
- The Connectivity options are not correct
  - a. If you change the CPU, even though it may be the same model number the Download & Transport information may be incorrect
  - b. Check that the device appears correctly in the Connectivity options.
- Check Cable type and Connections
  - a. LAN must be a cross type
  - b. RS232 must be a NULL modem type



## Where to find us

### **Eurotech S.p.A.**

Via Jacopo Linussio, 1 - 33020 Amaro (UD) ITALY  
Tel. +39 0433 486258 - Fax +39 0433 486263

[\*Welcom@eurotech.it\*](mailto:Welcom@eurotech.it)

[\*http://www.eurotech.it\*](http://www.eurotech.it)

[\*ftp://ftp.eurotech.it\*](ftp://ftp.eurotech.it)

## Technical & Sales Assistance

If you have a technical question, please contact the Eurotech Customer Support Service

**techsupp@eurotech.it**

Old and new versions of manuals, application notes, patches, drivers and BIOS can be found at:

**<ftp://ftp.eurotech.it/>**

If you have a sales question, please contact your local Eurotech Sales Representative or the Regional Sales Office for your area.

Additional and latest information is available at Eurotech website, located at:

**<http://www.eurotech.it>**