

25-Apr-2016

## Installing a CPU in Airtop-C0

### Required tools

1. LGA1150 compatible CPU (Haswell or Broadwell)
2. Phillips screwdriver
3. Allen 2.5mm screwdriver
4. 5.5mm nut driver
5. 4.5mm nut driver
6. Soft cloth
7. Thermal paste (recommended Arctic Silver 5)

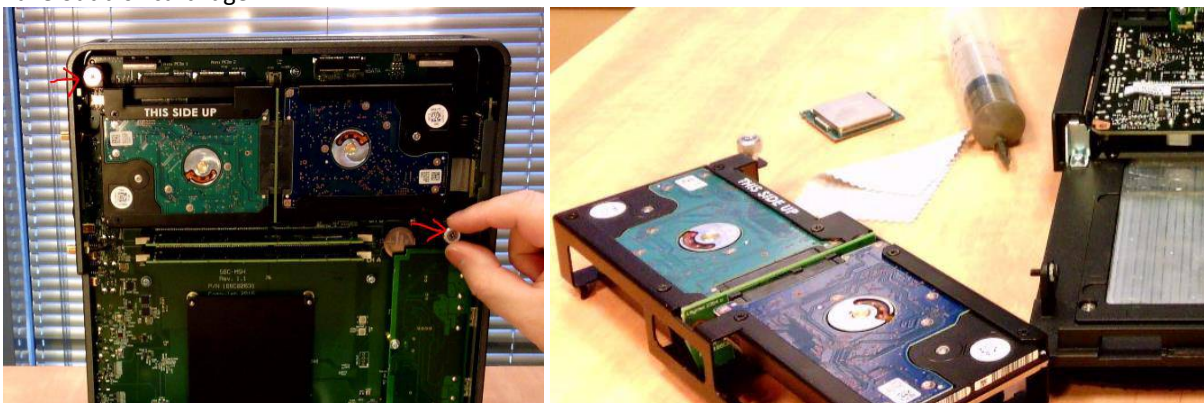
### Preparation

1. Disconnect Airtop from power
2. Disconnect all cables
3. Open Airtop clamshell by pressing the top-bar



### Disassembly

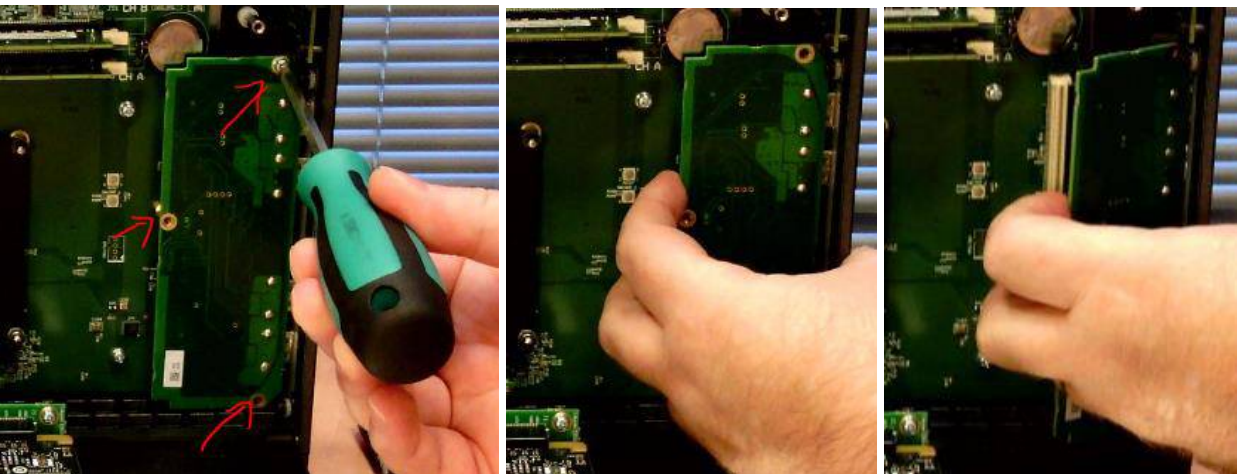
1. Take out disk cartridge



2. Remove WiFi module



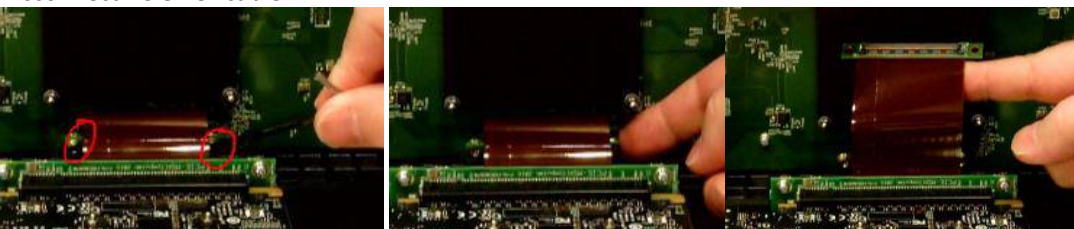
3. Remove FACE Module



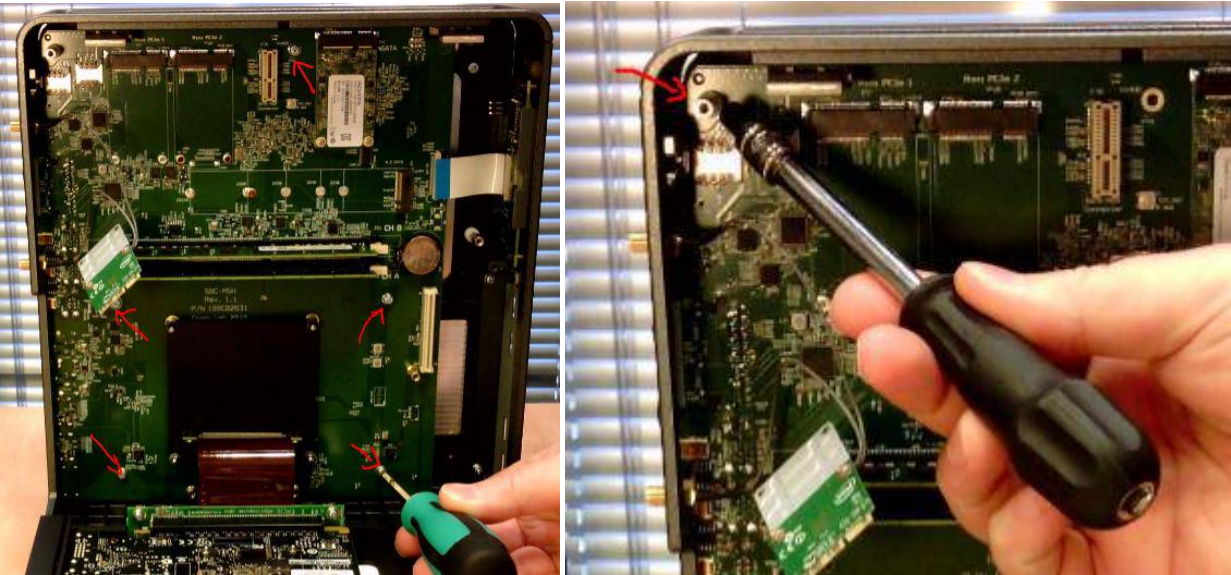
4. Disconnect I3M flat cable



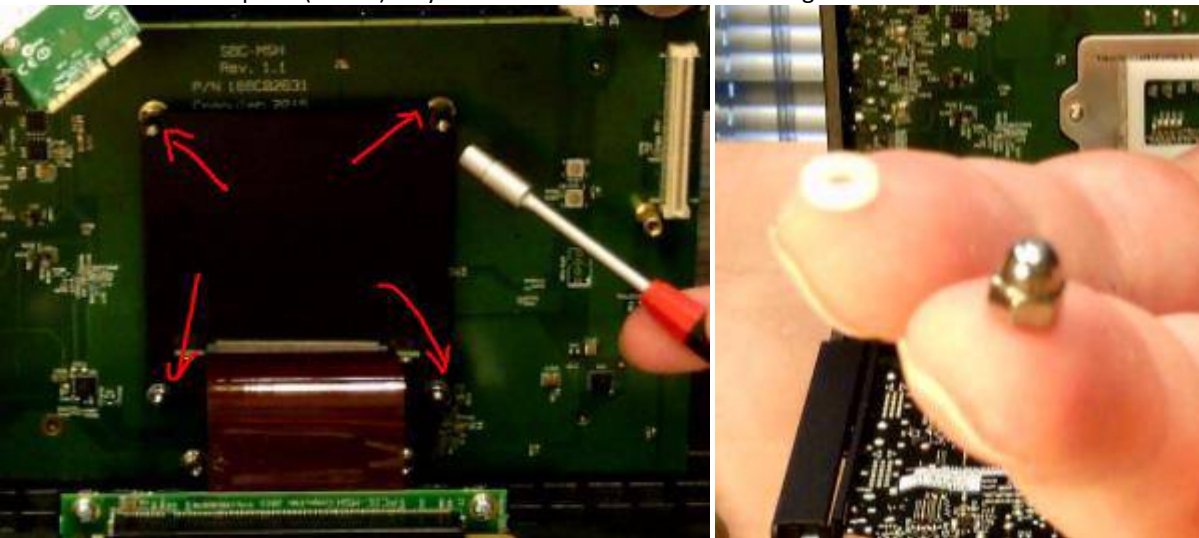
5. Disconnect PCIe flex cable



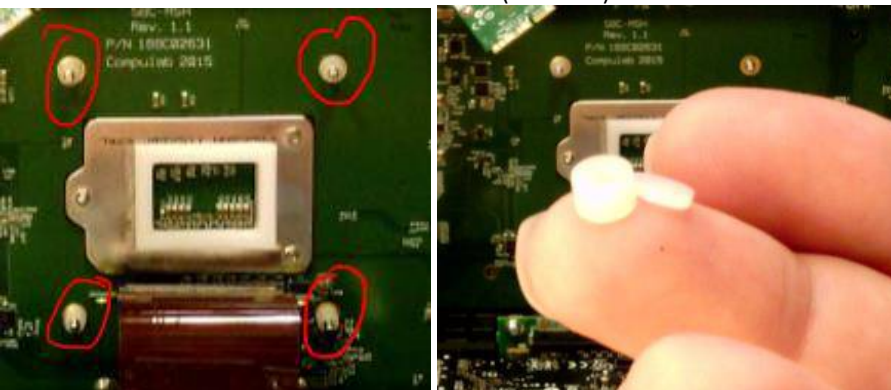
6. Unscrew motherboard (6 screws)



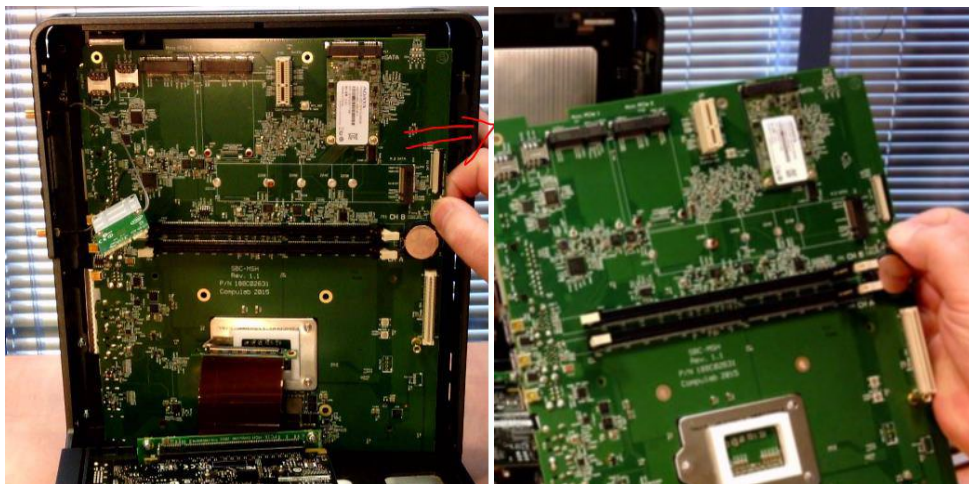
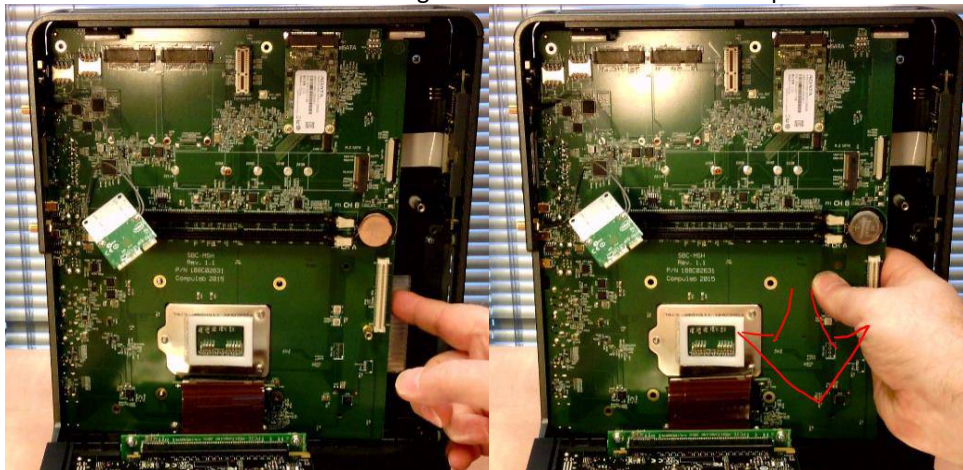
7. Unscrew CPU counter plate (4 nuts). Pay extra attention to washer stacking



8. Remove the two washers from each stand-off (8 overall)

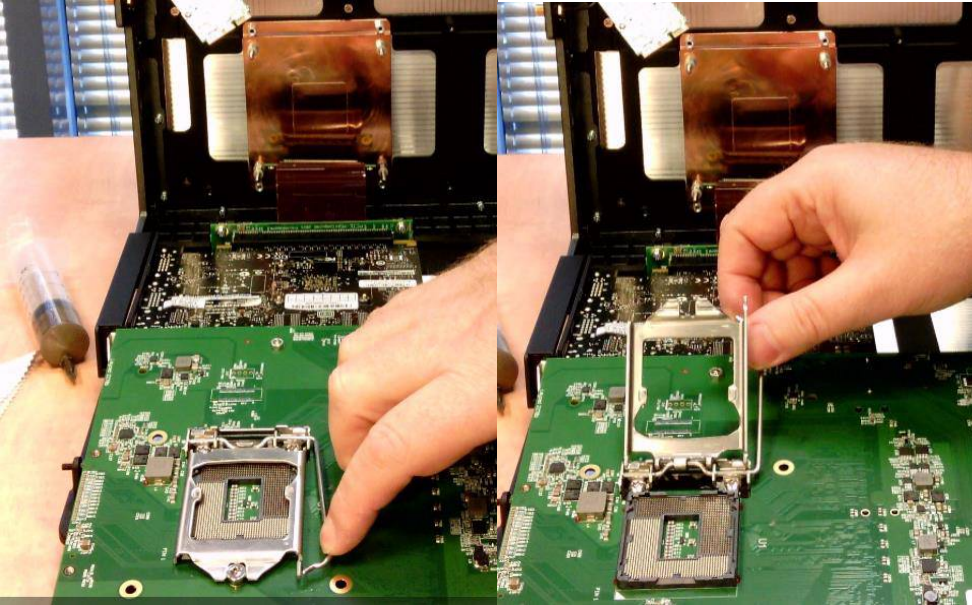


9. Pull out motherboard. Slide it to the right to take out from within Airtop

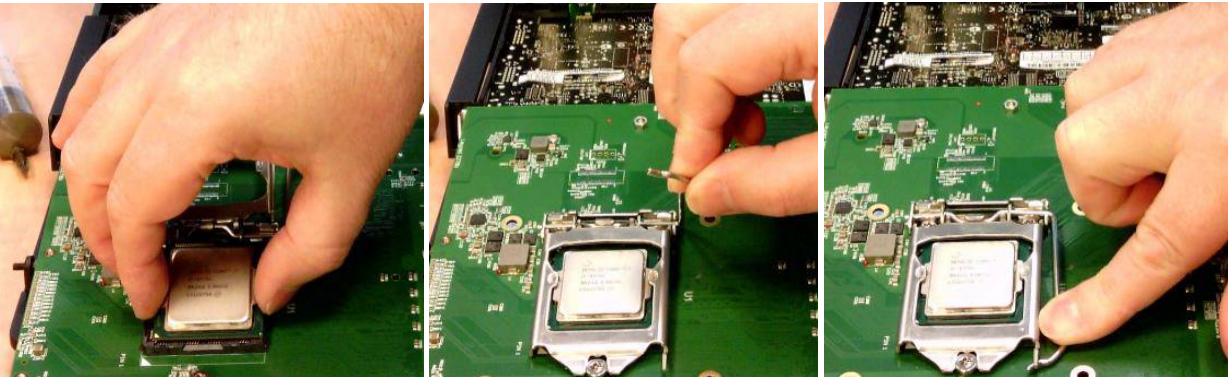


## Installing CPU

1. Open ILM



2. Install CPU and close ILM



3. Clean thoroughly surface of IHS (CPU metal cover) and surface of heatplate

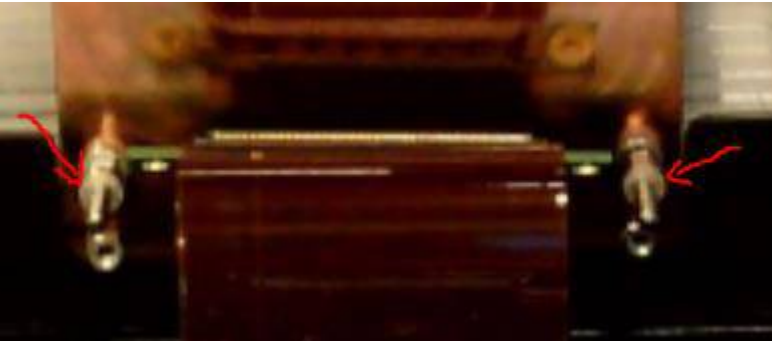


4. Apply thermal grease on CPU. Compulab recommends Arctic Silver 5

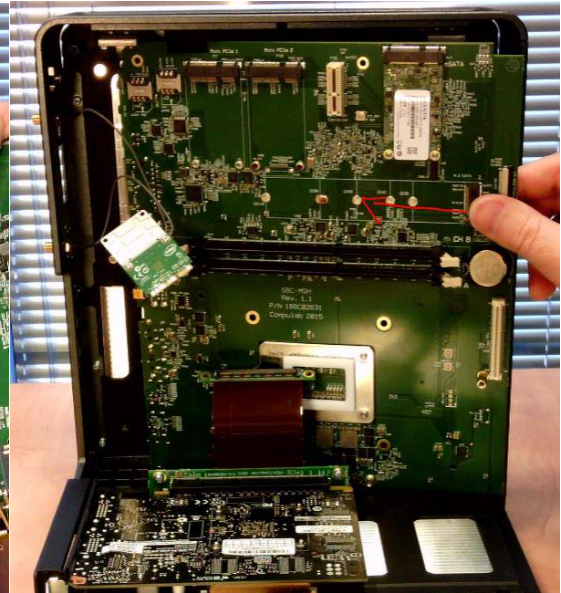
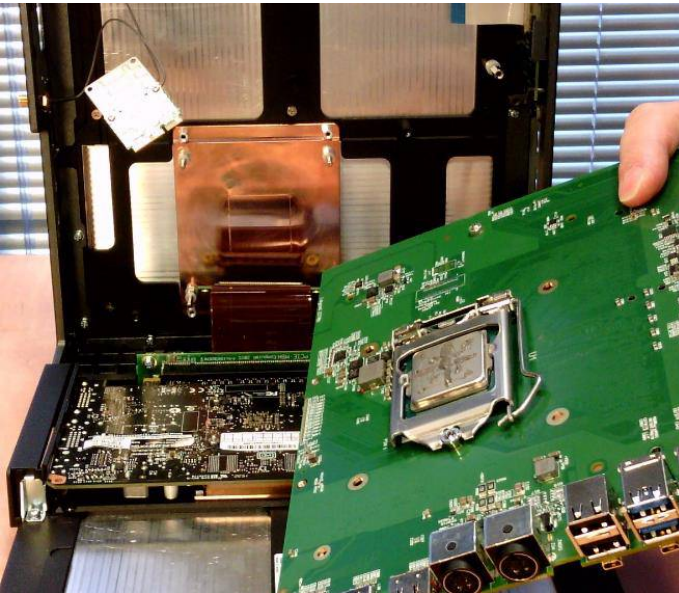


## Reassembly

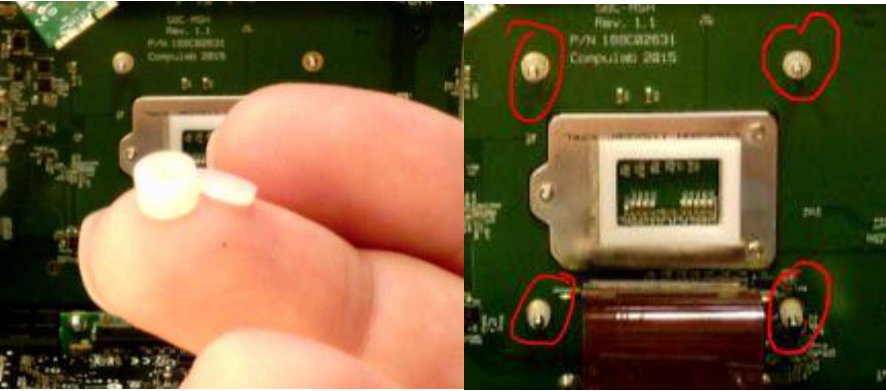
1. Note that each standoff should have a washer.



2. Place motherboard.



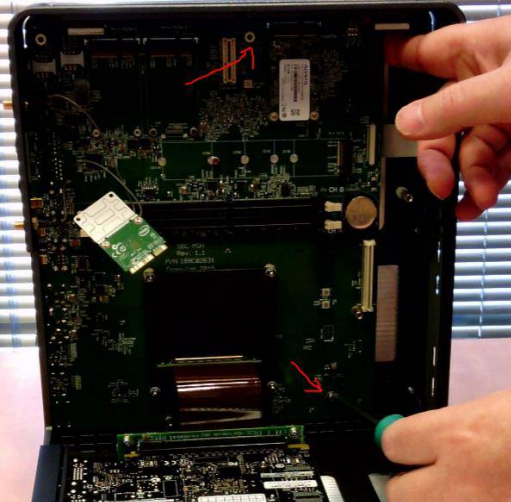
3. Place washers on standoffs.



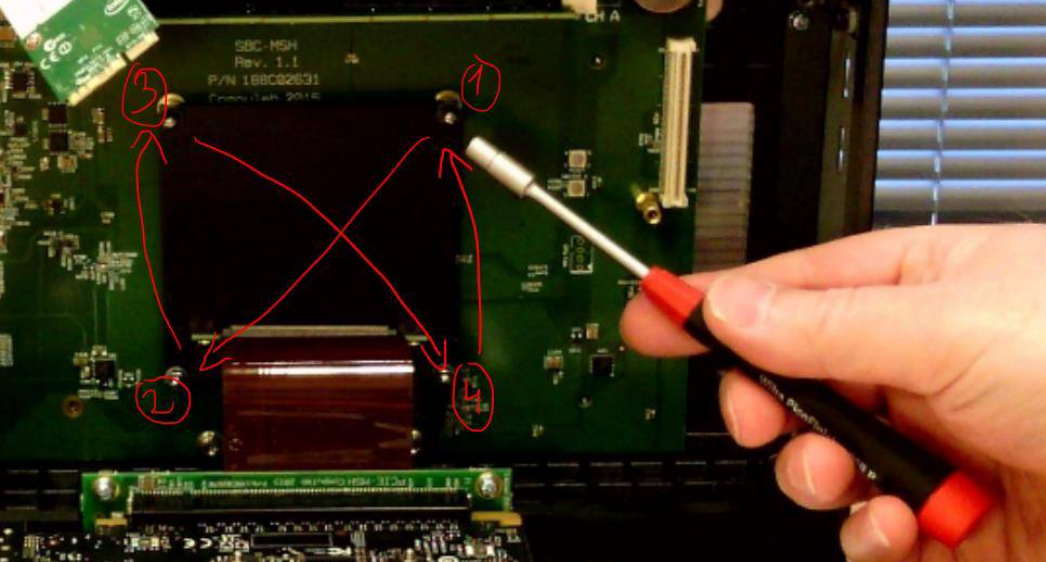
4. Place counter plate and while pressing the center of the counter plate for alignment, screw the 4 nuts and washers on counter plate **without tightening**



5. Screw two motherboard screws **without tightening**



- Carefully tighten nuts of counter-plate in opposite diagonals, slight tightening (quarter a rotation) every time.



Final tightening moment should be approx. 0.3Nm (or about the force you would manually use with a screwdriver without a lever)

- Screw remaining 4 motherboard screws
- Connect PCIe flex cable
- Connect I3M flat cable
- Reinstall FACE Module
- Reinstall WiFi module
- Reinstall disk cartridge

### Operating Airtop

- Close clamshell
- Consult Airtop owner's manual getting started for connecting and powering Airtop