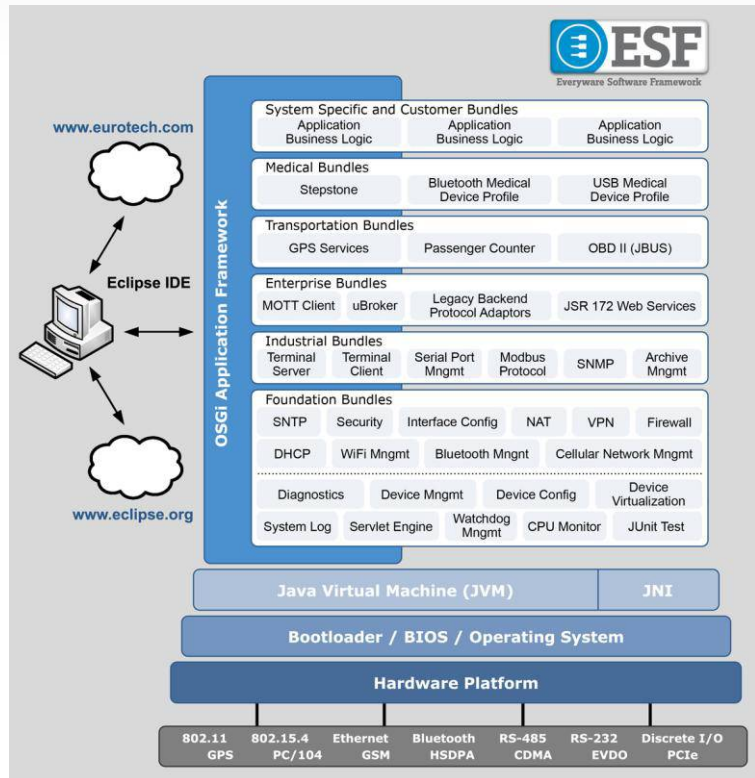


# Everyware™ Software Framework

## Benefits

- Quick development and faster time to market with Equinox OSGi Application Framework
- Portable, secure, network-centric application development using JavaME Virtual Machine
- Broad industry support and flexibility using Wind River 3.0 Linux
- Flexible development environment with hardware virtualization via extensive Java Plug-ins (bundles) that can be seamlessly ported across platforms
- Easy integration into industry standards such as Bluetooth, GPS, ZigBee, Ethernet and much more
- Available on several Eurotech hardware platforms



### Develop robust, flexible applications with minimal development and get to market faster with the Everyware™ Software Framework.

Eurotech's Everyware™ Software Framework (ESF) is a newly distributed development platform for Eurotech's range of embedded computers and systems that enables programmers to quickly develop applications using the Equinox IDE and Java ME virtual machine.

ESF separates the hardware from the foundation logic and the foundation logic from the business logic. This separation simplifies application development by providing common foundation layers and allowing OEMs to focus on application-specific code development. Device drivers are approached as services, implemented using simple APIs instead of complex code. The simple API removes the need to modify low-level OS code or configuration files by creating application code and adding process and vertical knowledge to the development process. Because ESF is based on standardized open software backed by large industry companies, OEMs can easily port existing applications from third parties to their own devices.

ESF middleware includes tooling that lets OEMs modify, reconfigure and maintain their application over time, to evolve as market demands change. Adaptability and flexibility to meet market requirements gives OEMs a huge competitive advantage over static, fixed functionality software applications. Manage risk through ESF, by selecting the framework that lets you adjust quickly, easily, and inexpensively.

# Everyware™ Software Framework

## Specifications

### CERTIFIED HARDWARE PLATFORM

Helios™ Platform  
Catalyst Module and Catalyst Module XL  
Catalyst EC and Catalyst EC XL  
DuraCOR 1200/1400  
ISIS  
PROTEUS

### OPERATING SYSTEM

Wind River Linux 3.0  
Win CE and WES (contact us for availability)

### JAVA VIRTUAL MACHINE

Java Micro Edition (J2ME) J9v2.4 with support of CDC1.1/Foundation 1.1

### OSGI APPLICATION FRAMEWORK

Equinox open source implementation from Eclipse Foundation

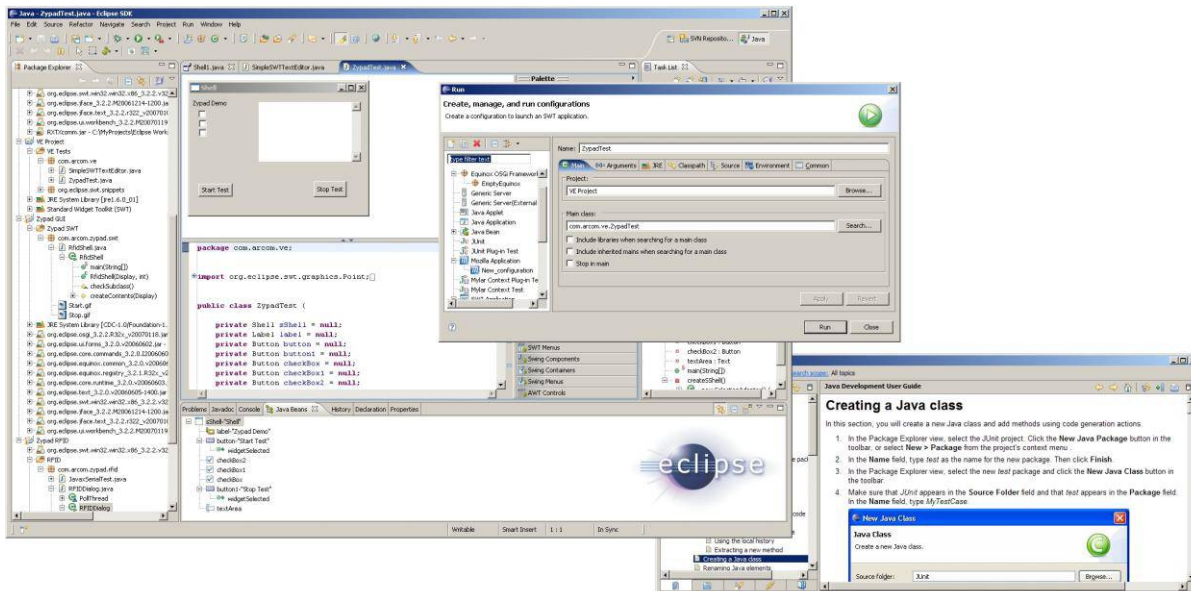
### JAVA BUNDLES

Foundation bundles providing core functionality and hardware virtualization to begin application development

- Device Configuration
- System logger
- Platform management (Watchdog, CPU temp, Sleep modes, etc)
- Management of all available network devices offered through platform

Vertical market bundles (contact us for availability)

- Industrial (SCADA)
- Enterprise (IBM Enterprise Connect)
- Transportation
- Medical (with association with Continua Alliance)



Note: The information in this document is subject to change without notice and should not be construed as a commitment by EUROTECH. While reasonable precautions have been taken, EUROTECH assumes no responsibility for any error that may appear in this document. Everyware™ Software Framework is a trademark of EUROTECH. All trademarks or registered trademarks are the properties of their respective companies.

FTF\_FSF\_DS071310

North America  
sales.na@eurotech.com

Europe, Middle East, and Africa  
sales.emea@eurotech.com

Latin America  
sales.la@eurotech.com

Asia Pacific  
sales.ap@eurotech.com

